



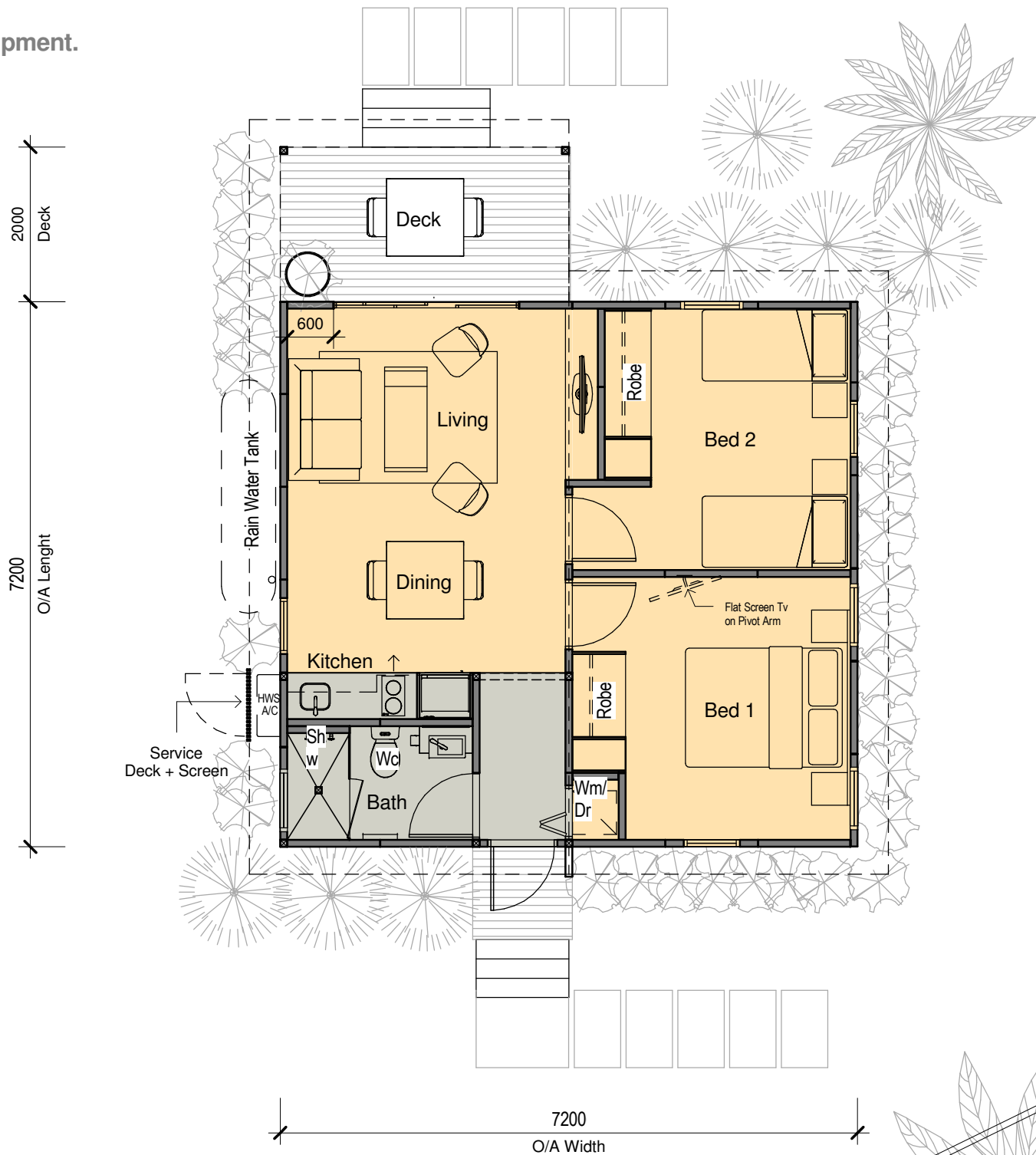
MiiHome - 2 Bedroom Flat Type A V.2 - Flatpack

Schematic Design 18.03.15



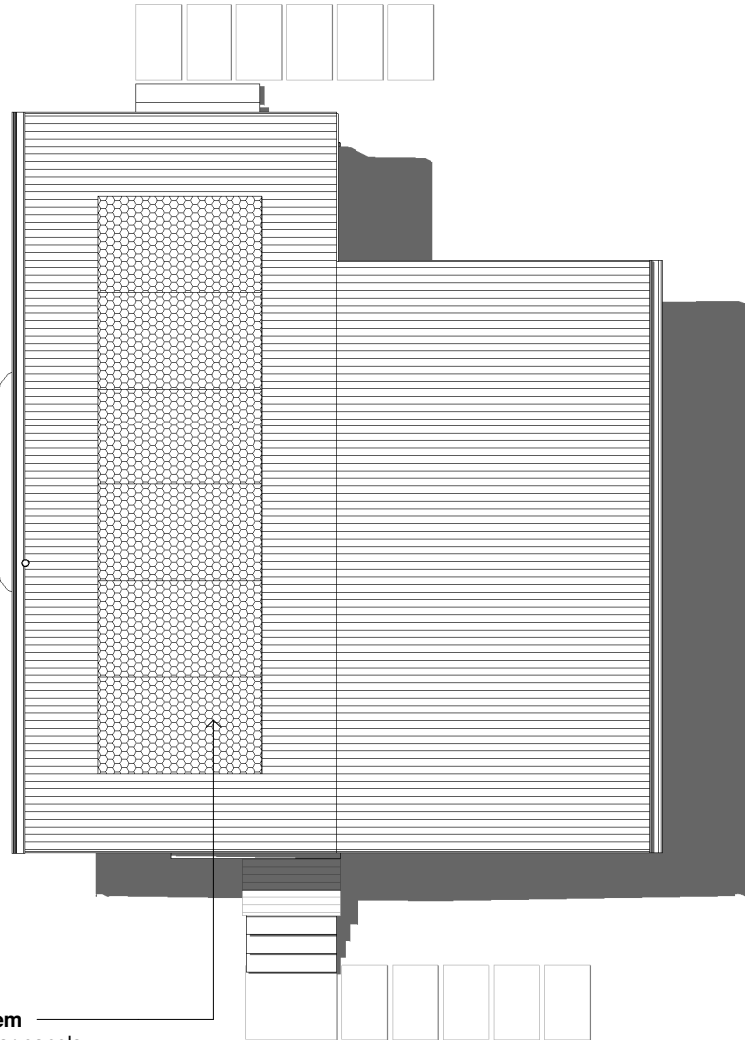
Exclusions to be Supplied & Installed by others.

- 1) Wet area seal
- 2)Plumbing fixtures & fittings
- 3) All electrical & Mechanical
- 4) Floor coverings
- 5) Furniture, fitout and equipment.



1 Level 1 Plan
1 : 75

NOTE: "The concept design drawing(s) illustrated in this document are for the purpose of developing & communicating the general design intent. All hard and soft landscape elements, internal and external FF&E, are NOT included or form part of MiiHome scope of works unless specifically noted."



2 Roof Plan
1 : 100

Ecologically Sustainable Development Initiatives

- 1.5 Kw - Solar System - Expected Annual Generation per Villa to be Approx 244 MWh - All energy not used while flat is empty to be send back to local grid.
- 4000 Litre Rain Water Harvesting Tank to service the Wc- Showers and/or Garden irrigation.
- In Situ Materials - Decking to be Recycled plastic Eco- Decking - Waste Free - Low Maintenance - UV Resistant - Mould / Termite Resistant
- Modular - Insulated Panel Building - Great Thermal Properties - Recyclable Buildings and components - Build in factory controlled environment with waste management procedures in place.
- LED lighting - LED Lights use only 15% of the energy a standard halogen uses, provide up to 85% of the light output and create less heat and are cool to touch. This makes LED Lights energy efficient are cost effective as air conditioning use can be lowered.
- Water Smart Fixtures - All Taps should be WELS rated to 4 or more stars to reduce overall water consumption of the Resort
- Only Low VOC Paints and adhesives are used on Module/ Materials Construction - This can be controlled on a Factory Enviroment.



1 Elevation 1
1 : 125



2 Elevation 2
1 : 125



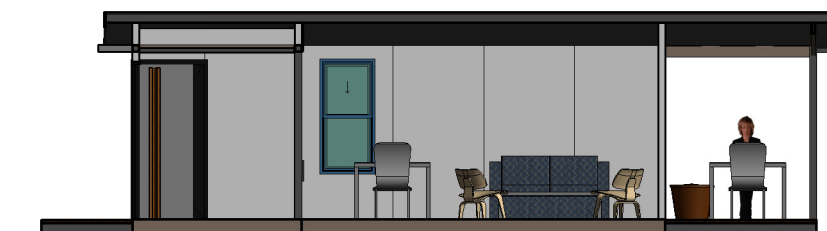
3 Elevation 3
1 : 125



4 Elevation 4
1 : 125



5 Section 3
1 : 100



6 Section 4
1 : 100

NOTE: "The concept design drawing(s) illustrated in this document are for the purpose of developing & communicating the general design intent. All hard and soft landscape elements, internal and external FF&E, are NOT included or form part of MiiHome scope of works unless specifically noted."

PRELIMINARY